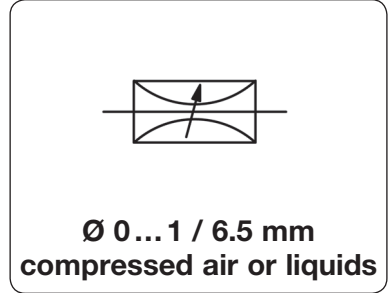


Description	The modular, compact micro needle valve is for fine-flow adjustment of gases and liquids. It consists of an inner valve and body with straight or angle connector. The valve is free from oil and grease.	
Media	5 µm filtered compressed air, non-corrosive gases or liquids	
Operating pressure	vacuum up to positive pressure of max. 20 bar	
Adjustment	The micro valve has a 15-turn spindle to fully open from a closed condition. It operates with virtually no hysteresis and closes clockwise or optionally counterclockwise. The valve needle is non-rotating and thus provides a stable adjustment.	
Panel mounting	borehole 15 mm,	mounting through two screws M4x10
Temperature range	-20 °C to 150 °C / - 4 °F to 302 °F for FKM, -40 °C to 90 °C / -40 °F to 194 °F for EPDM	-30 °C to 90 °C / -22 °F to 194 °F for NBR/Buna-N,
Material	Body: anodized aluminium, optionally SST Inner valve: brass, optionally stainless steel	Elastomer: NBR/Buna-N Knob: aluminium and plastic



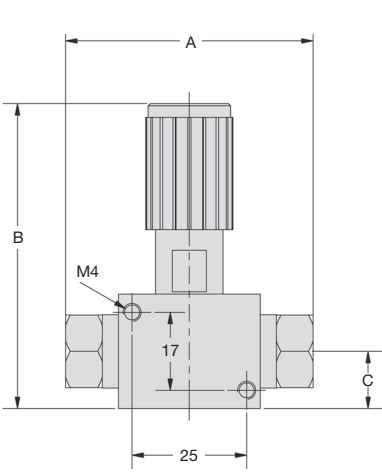
Dimensions			Needle size mm	K _v value (m³/h)	Flow rate		Connection thread G	Order number
A	B	C			Water l/min*2	Air l/min*1		

Precision needle valve									with straight pass, right-hand closing, with knob, aluminium/brass/FKM, supply: max. 20 bar	VR
54	64	10	1.0	0.0007	0... 0.01	0... 0.3	G¼		VR6-02A	
			1.5	0.005	0... 0.10	0... 2.5			VR6-02B	
			2.0	0.01	0... 0.15	0... 7			VR6-02C	
			2.5	0.04	0... 0.6	0... 17			VR6-02D	
			3.0	0.10	0... 2.3	0... 60			VR6-02E	
62	80	17,5	4.0	0.58	0... 8	0... 250	G½		VR6-04A	
			6.5	1.00	0... 16	0... 425			VR6-04B	

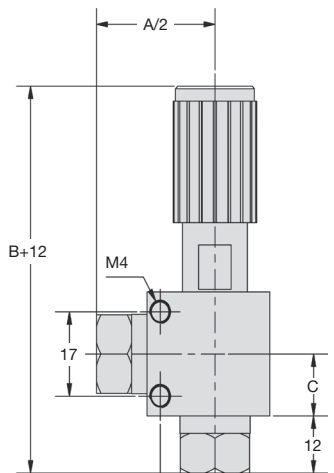


Special options, add the appropriate letter

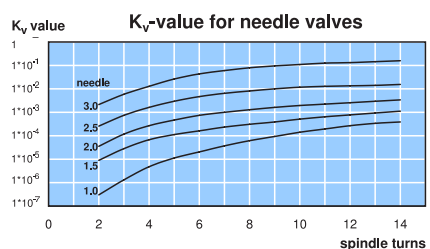
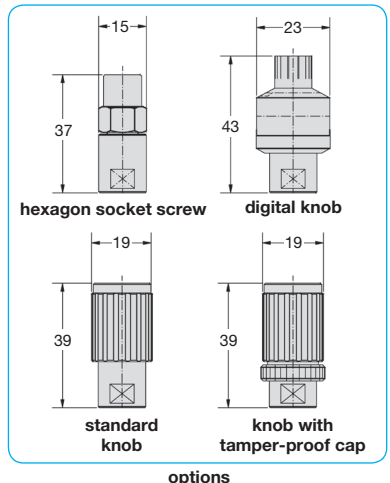
angle valve	corner version	for G¼	VR5-02 .
left-hand closing	closing counterclockwise	for G¼	VR . -02 . L
stainless steel body	body and valve made of stainless steel 316	for G¼	VR . -02 . S
EPDM elastomer	-40 °C to 90 °C / -40 °F to 194 °F, SST body only	for G¼	VR . -02 . SE
tamper-proof cap	on valve with knob		VR . -02 . T
digital knob	with 100 increments, left-hand closing	for G¼	VR . -02 . R
digital knob	with 100 increments, left-hand closing	for G½	VR . -02 . R
hexagon socket screw	and locknut		VR . -02 . I



VR6



VR5



*1 at 1 bar operating pressure and open outlet *2 at 1 bar pressure difference